

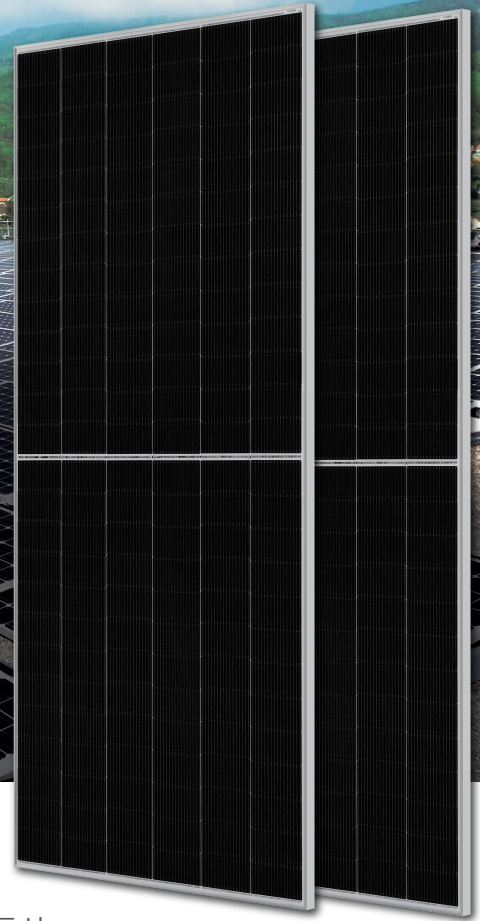
## DEEP BLUE 4.0

625W n-type Bifacial Double Glass  
High Efficiency Mono Module  
n-type 하프셀 양면 발전 모듈  
JAM78D40 600-625/GB Series

**Mono**

### Introduction

최신 SMBB 기술이 적용된 n-type 태양전지를 Half-cell 배열, gapless 리본연결 등의 최신 모듈 기술과 결합하였습니다. 이러한 모듈은 더 높은 출력, 더 낮은 LID, 더욱더 우수한 낮은 조도에의 반응성 및 우수한 온도계수의 특성을 실현합니다.



더 많은 발전량으로  
LCOE 개선



더욱 저감된 LID 특성



약한 빛의 세기에도  
많은 발전



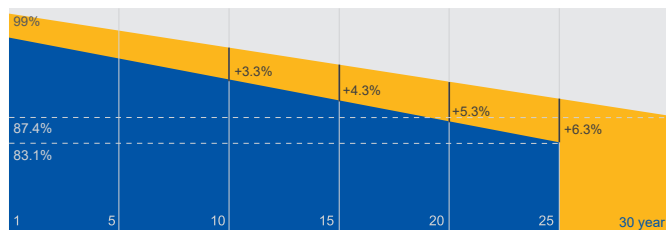
우수한 온도 계수

### Superior Warranty

- 12-year product warranty
- 30-year linear power output warranty

1% 1st-year Degradation

0.4% Annual Degradation  
Over 30 years



■ n-type Bifacial Double Glass Module Linear Performance Warranty

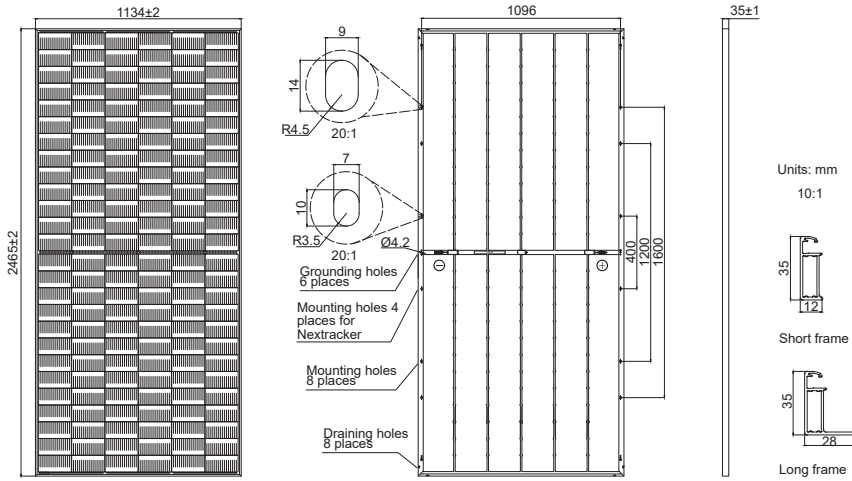
■ Standard Module Linear Performance Warranty

### Comprehensive Certificates

- IEC 61215, IEC 61730
- ISO 9001: 2015 Quality management systems
- ISO 14001: 2015 Environmental management systems
- ISO 45001: 2018 Occupational health and safety management systems
- IEC 62941: 2019 Terrestrial photovoltaic (PV) modules - Quality system for PV module manufacturing



**MECHANICAL DIAGRAMS**



Remark: customized frame color and cable length available upon request

**SPECIFICATIONS**

|                                    |                                     |
|------------------------------------|-------------------------------------|
| Cell                               | Mono-16BB                           |
| Weight                             | 34.6kg                              |
| Dimensions                         | 2465±2mm×1134±2mm×35±1mm            |
| Cable Cross Section Size           | 4mm <sup>2</sup> (IEC), 12 AWG(UL)  |
| No. of cells                       | 156(6×26)                           |
| Junction Box                       | IP68, 3 diodes                      |
| Connector                          | QC 4.10-351/ MC4-EVO2A              |
| Cable Length (Including Connector) | 1500mm(+)/1500mm(-)                 |
| Front Glass/Back Glass             | 2.0mm/2.0mm                         |
| Packaging Configuration            | 31pcs/Pallet, 496pcs/40HQ Container |

**ELECTRICAL PARAMETERS AT STC**

| TYPE   | JAM78D40 -600/GB  | JAM78D40 -605/GB | JAM78D40 -610/GB | JAM78D40 -615/GB | JAM78D40 -620/GB | JAM78D40 -625/GB |
|--|---|------------------|------------------|------------------|------------------|------------------|
| Rated Maximum Power(Pmax) [W]                      | 600   | 605              | 610              | 615              | 620              | 625              |
| Open Circuit Voltage(Voc) [V]                      | 54.75   | 54.90            | 55.05            | 55.20            | 55.34            | 55.49            |
| Maximum Power Voltage(Vmp) [V]                     | 45.67   | 45.80            | 45.94            | 46.07            | 46.20            | 46.37            |
| Short Circuit Current(Isc) [A]                     | 14.02   | 14.09            | 14.16            | 14.23            | 14.30            | 14.36            |
| Maximum Power Current(Imp) [A]                     | 13.14   | 13.21            | 13.28            | 13.35            | 13.42            | 13.48            |
| Module Efficiency [%]                              | 21.5  | 21.6             | 21.8             | 22.0             | 22.2             | 22.4             |
| Power Tolerance                                    | 0~+5W   |                  |                  |                  |                  |                  |
| Temperature Coefficient of Isc(α <sub>Isc</sub> )  | +0.046%/°C  |                  |                  |                  |                  |                  |
| Temperature Coefficient of Voc(β <sub>Voc</sub> )  | -0.260%/°C  |                  |                  |                  |                  |                  |
| Temperature Coefficient of Pmax(γ <sub>Pmp</sub> ) | -0.300%/°C  |                  |                  |                  |                  |                  |
| STC  | Irradiance 1000W/m <sup>2</sup> , cell temperature 25°C, AM1.5G |                  |                  |                  |                  |                  |

Remark: Electrical data in this catalog do not refer to a single module and they are not part of the offer. They only serve for comparison among different module types.

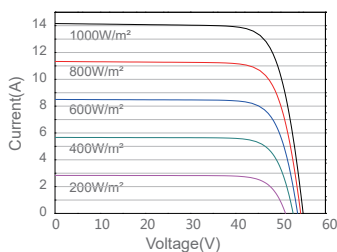
**ELECTRICAL CHARACTERISTICS WITH 5% BACKSIDE POWER GAIN**

**OPERATING CONDITIONS**

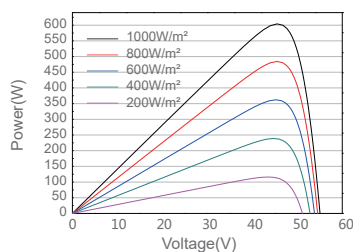
| TYPE   | JAM78D40 -600/GB | JAM78D40 -605/GB | JAM78D40 -610/GB | JAM78D40 -615/GB | JAM78D40 -620/GB | JAM78D40 -625/GB | Maximum System Voltage      | 1500V DC                        |
|--|------------------|------------------|------------------|------------------|------------------|------------------|-----------------------------|---------------------------------|
| Rated Max Power(Pmax) [W]  | 630              | 635              | 641              | 646              | 651              | 656              | Operating Temperature       | -40°C~+85°C                     |
| Open Circuit Voltage(Voc) [V]  | 54.78            | 54.93            | 55.08            | 55.23            | 55.37            | 55.52            | Maximum Series Fuse Rating  | 30A                             |
| Max Power Voltage(Vmp) [V]   | 45.66            | 45.80            | 45.93            | 46.07            | 46.20            | 46.36            | Maximum Static Load, Front* | 5400Pa(112 lb/ft <sup>2</sup> ) |
| Short Circuit Current(Isc) [A]   | 14.72            | 14.79            | 14.87            | 14.94            | 15.02            | 15.08            | Maximum Static Load, Back*  | 2400Pa(50 lb/ft <sup>2</sup> )  |
| Max Power Current(Imp) [A]   | 13.80            | 13.87            | 13.94            | 14.02            | 14.09            | 14.15            | NOCT                        | 45±2°C                          |
| Backside power gain  | 5%               |                  |                  |                  |                  |                  | Bifaciality**               | 80%±10%                         |
| *For Nextacker installations, maximum static load please take compatibility approve letter between JA Solar and Nextacker for reference. |                  |                  |                  |                  |                  |                  | Fire Performance            | UL Type 29                      |
| **Bifaciality=Pmax, rear/Rated Pmax, front   |                  |                  |                  |                  |                  |                  |                             |                                 |

**CHARACTERISTICS**

Current-Voltage Curve JAM78D40-610/GB



Power-Voltage Curve JAM78D40-610/GB



Current-Voltage Curve JAM78D40-610/GB

